

Tesla/NJ Barrier Crash



by



Alain L. Kornhauser, PhD

Professor, ORFE
(Operations Research & Financial Engineering)

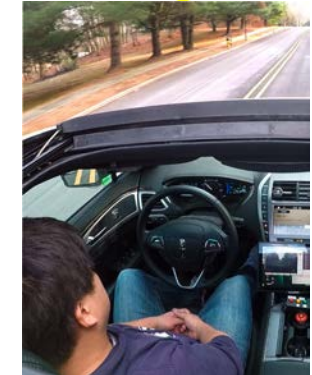
Director, CARTS

(Consortium for Automated Road Transportation Safety)

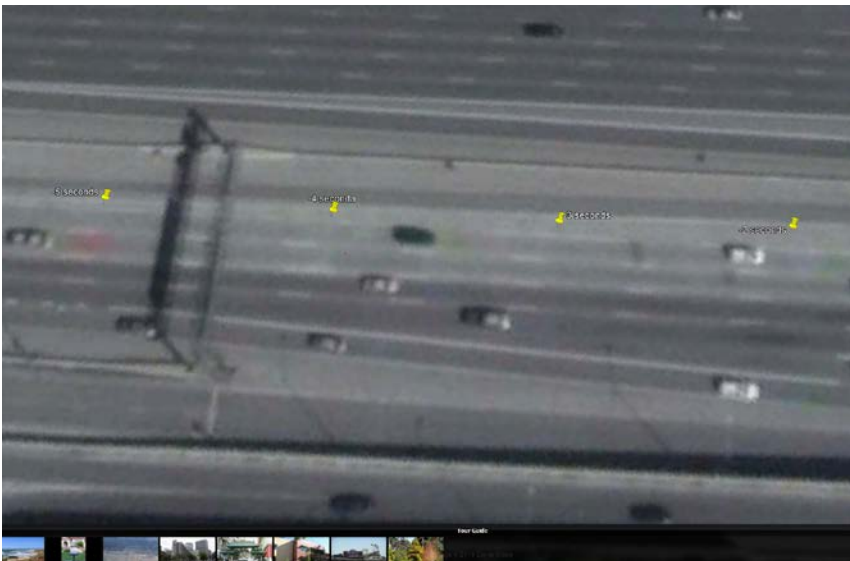
Faculty Chair, PAVE
(Princeton Autonomous Vehicle Engineering)

Princeton University

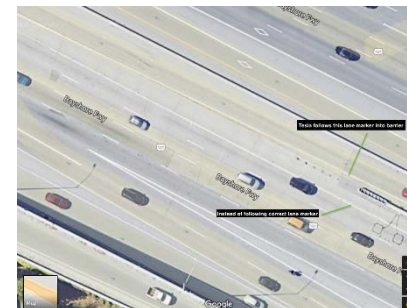
Presented at



Aerial image from Oct 2017



1. No Cross-hatching in points
2. Faded left side lane line during 4th & 3rd second before crash See [video](#)
 - Caused? Lateral Control to Jump to line more to the left. Yipes

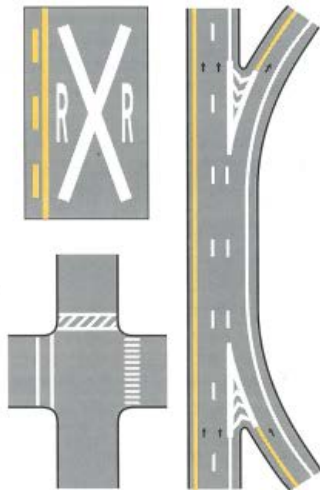


Cross-hatching in points Int US 1 & I 295 NJ



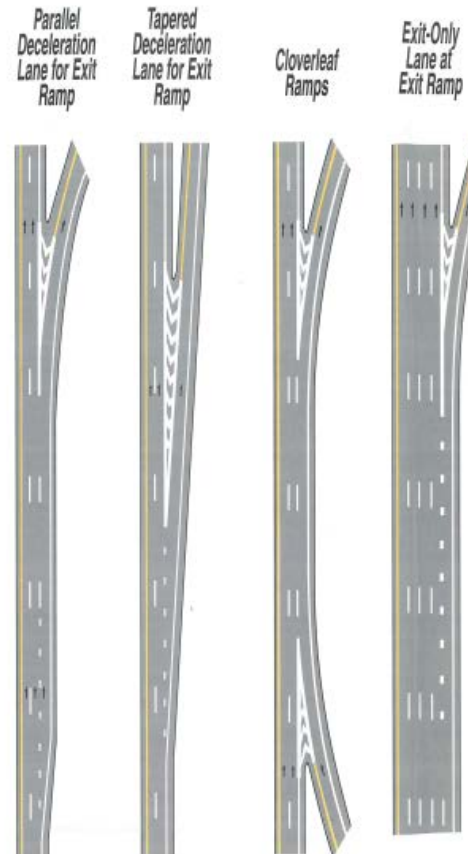
<https://mutcd.fhwa.dot.gov/services/publications/fhwaop02090/uspavementmarkings.pdf>

United States Pavement Markings



U.S. Department of Transportation
Federal Highway Administration
Washington, DC 20590

Freeway Entrance and Exit Markings



Didn't California
get the Memo?

Discussion!

Thank You

alaink@princeton.edu

www.SmartDrivingCar.com